

KILN & LODGE

ESTATE AGENTS : REDEFINED



6 Philip Whitehead Road

Chelmsford, CM1 6HG

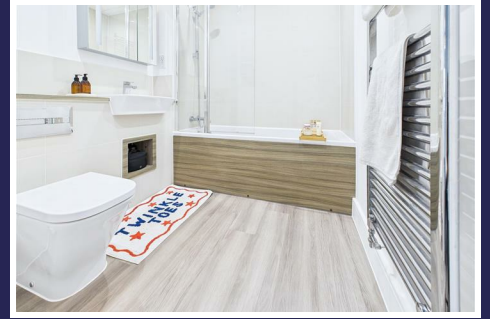
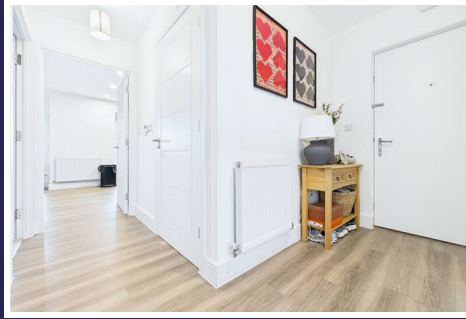
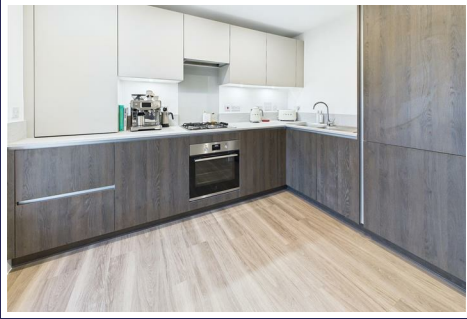
Asking price £240,000



6 Philip Whitehead Road

Chelmsford, CM1 6HG

Asking price £240,000



Secure Communal Entrance

Communal Entrance door, secure telephone entry. Post Boxes.

Entrance Hall

11'2 x 3'2 (3.40m x 0.97m)

Entrance door, window to rear, storage cupboard.

Bedroom

11'2 x 9'4 (3.40m x 2.84m)

Window to rear, fitted wardrobes, carpet.

Bathroom

7'2 x 5'6 (2.18m x 1.68m)

Panelled bath with shower over, wash hand basin, close coupled WC. heated towel rail, part tiled walls.

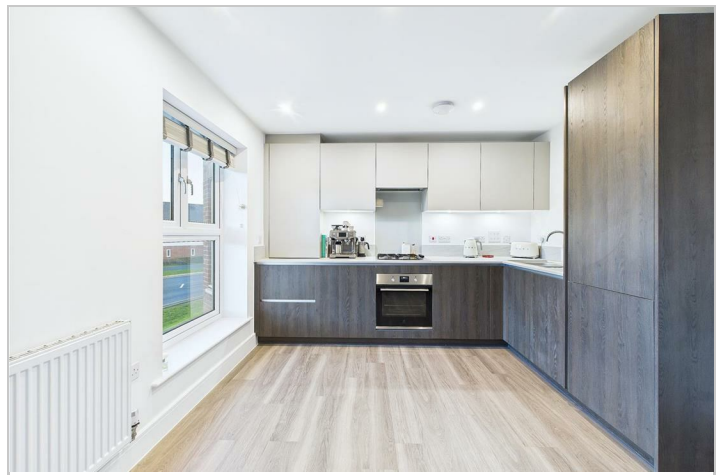
Open Plan Kitchen/Living Area

22'8 x 11' (6.91m x 3.35m)

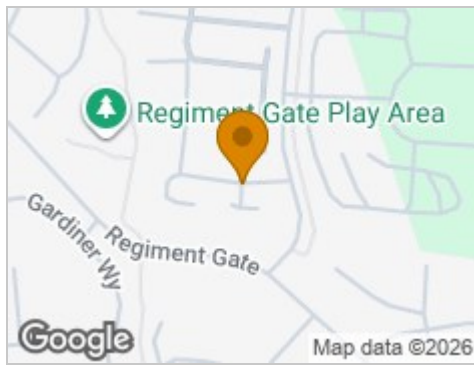
Bay window and further window to front. radiator, wood effect flooring. The kitchen consists of an integrated electric oven, fridge/freezer, washer dryer and dishwasher. Work surfaces incorporate gas hob with extractor over and sink unit.

Exterior

Allocated Parking



Road Map



Hybrid Map



Terrain Map



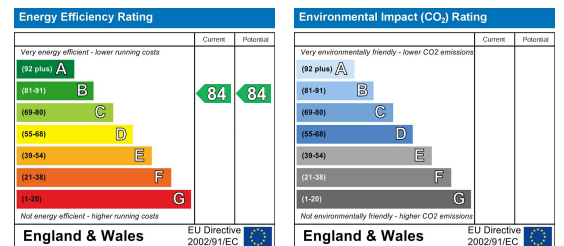
Floor Plan



Viewing

Please contact our Chelmsford Office on 01245 330764 if you wish to arrange a viewing appointment for this property or require further information.

Energy Efficiency Graph



These particulars, whilst believed to be accurate are set out as a general outline only for guidance and do not constitute any part of an offer or contract. Intending purchasers should not rely on them as statements of representation of fact, but must satisfy themselves by inspection or otherwise as to their accuracy. No person in this firm's employment has the authority to make or give any representation or warranty in respect of the property.